

# Institutional

**Carpenter  
Wright  
Engineers**



**Structural Consultants**

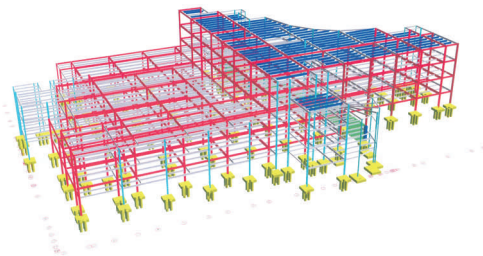


**Baptist Hospital West**  
Knoxville, Tennessee

*Hospitals*

The 350,000 square foot Baptist Hospital West is comprised of a three-story women's hospital, a three-story surgery center, a five-story patient wing, and a four-story medical office building.

Carpenter Wright Engineers and the steel fabricator established an electronic data interchange protocol to accelerate the shop drawing production and review period, slicing seven weeks off of the anticipated construction schedule. This project was featured in the June, 2003 issue of Modern Steel Construction.



**Architect:** *BarberMcMurry architects*

**Contractor:** *Johnson & Gaylon*

**Steel Fabricator and Erector:** *Superior Steel, Inc.*

**CWE Design Offices:**

**Nashville  
Knoxville**