

Institutional

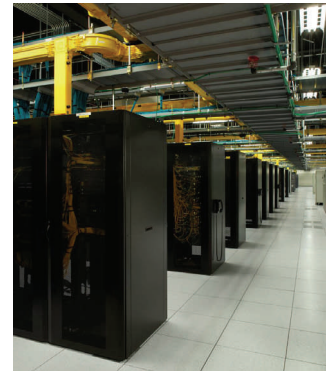


Tennessee Processing Center
Nashville, Tennessee

*Mission Critical
Data Centers*

This two-story building was designed as a “hardened building” to house a mission critical computer data center, conforming to Federal Reserve regulations issued after the 9/11/01 terrorist attack on The World Trade Center. The structure was designed to resist a wind speed of 200 mph.

These facilities are normally constructed as single-story structures, but site constraints required a two-story configuration with a total area of approximately 215,000 square feet. The Owner requested a column grid of 40'x40' and a superimposed floor load of over 350 psf. The structural system required approximately 100,000 square feet of a one-way concrete beam and slab system supported by post-tensioned concrete girders.



Construction Manager: *Tishman Construction Corporation*

Architects: *Sigma 7 and Hawkins Development Corporation*

CWE Design Offices:

**Nashville
Knoxville**